

**AURUNZE**



**TBR TIRE  
CATALOGUE 2024**

**AURUNZE**



# DIRECTORY

<b>A</b>	A300 .....	01
	A302 .....	02
	A303 .....	03
	A818 PRO .....	21
<b>S</b>	S226 .....	04
	S297 .....	05
	S358 .....	06
	S368 .....	07
	S396 .....	08
	S397 .....	09
	S600 .....	10
	S210 PRO .....	22
	S216 PRO .....	23
	S618 PRO .....	24
	<b>D</b>	D298 .....
D318 .....		12
D328 .....		13
D338 .....		14
D378 .....		15
D389 .....		16
D398 .....		17
D828 .....		18
D875 .....		19
D876 .....		24
D218 PRO .....		25
D518 PRO .....		26
D528 PRO .....		27
D558 PRO .....		28
D568 PRO .....		29
D578 PRO .....		30
D638 PRO .....		31
D658 PRO .....		32
D668 PRO .....		33
D678 PRO .....		34
D812 PRO .....	35	
D877 PRO .....	36	
D978 PRO .....	37	
<b>W</b>	W868 PRO .....	38

# CONTENTS



**A300**    **A302**    **A303**    **S226**



**S297**    **S358**    **S368**    **S396**



**S397**    **S600**    **D298**    **D318**



**D328**    **D338**    **D378**    **D389**    **D398**





**D828** **D875** **D876** **A818 PRO**



**S210 PRO** **S216 PRO** **S618 PRO** **D218 PRO**



**D518 PRO** **D528 PRO** **D558 PRO** **D568 PRO** **D578 PRO**



**D638 PRO** **D658 PRO** **D668 PRO** **D678 PRO** **D812 PRO**



**D877 PRO** **D978 PRO** **W868 PRO**



**A300**

- ♦ Resistant to cuts and stone retention.
- ♦ Wide tread for long life and uniform wear.
- ♦ Excellent driving stability, traction and durability.
- ♦ All position tyre for city and highway service.

SIZE	P.R.	LOAD INDEX	SPEED SYMBLE	LOAD CAPACITY KGS		STANDARD RIM	TREAD DEPTH MM	TREAD WIDTH MM
				SINGLE	DUAL			
9.00R20	16PR	144/142	K	2800	2650	7.00	15.5	195
10.00R20	18PR	149/146	K	3250	3000	7.50	16.5	214
11.00R20	18PR	152/149	K	3550	3250	8.00	17.0	223
12.00R20	20PR	156/153	J	4000	3650	8.50	17.5	240
11R22.5	16PR	146/143	L	3000	2725	8.25	16.5	214
	18PR	149/146	L	3250	3000	8.25	16.5	214
11R24.5	16PR	149/146	L	3250	3000	8.25	16.5	214
	18PR	152/149	L	3550	3250	8.25	16.5	214
12R22.5	18PR	152/149	M	3550	3250	9.00	15.3	228
315/80R22.5	20PR	157/154	K	4125	3750	9.00	15.0	235
295/80R22.5	18PR	152/149	M	3550	3250	9.00	14.5	232
13R22.5	20PR	156/153	K	4000	3650	9.75	15.0	238
12.00R24	20PR	160/157	K	4500	4125	8.50	15.0	238



# A302



- ♦ Wide tread enables long wear life and stone retention resistance
- ♦ Deep tread for extra-long life and good wet traction.
- ♦ Combines durability in mild off road and long life on-road with good traction
- ♦ Suitable for all wheels position.

SIZE	P.R.	LOAD INDEX	SPEED SYMBL	LOAD CAPACITY KGS		STANDARD RIM	TREAD DEPTH MM	TREAD WIDTH MM
				SINGLE	DUAL			
295/80R22.5	18PR	152/149	G	3550	3250	9.00	14.5	232

**AURUNZE**



# A303

- ♦ Fuel efficient with lower rolling resistance.
- ♦ Excellent traction and wet weather handling.
- ♦ Wider tread and complex groove angles offers enhanced tyre life with superior resistance to irregular wear.
- ♦ Suitable for all wheel positions

SIZE	P.R.	LOAD INDEX	SPEED SYMBL	LOAD CAPACITY KGS		STANDARD RIM	TREAD DEPTH MM	TREAD WIDTH MM
				SINGLE	DUAL			
315/80R22.5	20PR	157/154	K	4125	3750	9	15	235
12.00R24	20PR	160/157	K	4500	4125	8.50	15	238



# S226



- ◆ Exceptional mileage and resistance to irregular wear.
- ◆ Suitable for steer wheels and highway road application.
- ◆ Excellent resistance to rib-tearing.
- ◆ Excellent driving stability and durability.

SIZE	P.R.	LOAD INDEX	SPEED SYMBLE	LOAD CAPACITY KGS		STANDARD RIM	TREAD DEPTH MM	TREAD WIDTH MM
				SINGLE	DUAL			
12R22.5	18PR	152/149	M	3550	3250	9.00	15.50	228

# AURUNZE



# S297

- ◆ Professional low noise pattern design, excellent steering performance, anti-wear.
- ◆ Low fuel consumption, high economical efficiency
- ◆ Better handling for safe driving

SIZE	P.R.	LOAD INDEX	SPEED SYMBLE	LOAD CAPACITY KGS		STANDARD RIM	TREAD DEPTH MM	TREAD WIDTH MM
				SINGLE	DUAL			
295/75R22.5	18PR	146/143	M	3000	2725	9.00	15	220



# S358



- ◆ Excellent resistance to irregular wear.
- ◆ Suitable for steer wheels and highway road application
- ◆ Exceptional mileage and resistance to irregular wear.
- ◆ Excellent driving stability and durability.

SIZE	P.R.	LOAD INDEX	SPEED SYMBLE	LOAD CAPACITY KGS		STANDARD RIM	TREAD DEPTH MM	TREAD WIDTH MM
				SINGLE	DUAL			
315/80R22.5	20PR	157/154	L	4125	3750	9.00	14.50	232

# AURUNZE



# S368

- ◆ Excellent resistance to irregular wear.
- ◆ Suitable for steer wheels and highway road application
- ◆ Exceptional mileage and resistance to irregular wear.
- ◆ Excellent driving stability and durability.

SIZE	P.R.	LOAD INDEX	SPEED SYMBLE	LOAD CAPACITY KGS		STANDARD RIM	TREAD DEPTH MM	TREAD WIDTH MM
				SINGLE	DUAL			
295/80R22.5	18PR	152/149	M	3550	3250	9.00	15.5	232



# S396



- ◆ Exceptional mileage and resistance to irregular wear.
- ◆ Excellent driving stability and durability.
- ◆ Suitable for steer and trailer wheels.

SIZE	P.R.	LOAD INDEX	SPEED SYMBLE	LOAD CAPACITY KGS		STANDARD RIM	TREAD DEPTH MM	TREAD WIDTH MM
				SINGLE	DUAL			
385/65R22.5	20PR	160	K	4500		11.75	15	276

**AURUNZE**



# S397

- ◆ Wide tread enables long wear life and stone retention resistance.
- ◆ Deep tread for extra-long life and good wet traction.
- ◆ Combines durability in mild off road and long life on-road with good anti-sideslip.

SIZE	P.R.	LOAD INDEX	SPEED SYMBLE	LOAD CAPACITY KGS		STANDARD RIM	TREAD DEPTH MM	TREAD WIDTH MM
				SINGLE	DUAL			
385/65R22.5	20PR	160	K	4500		11.75	15.5	276



# S600



- ◆ Tapered tread grooves resist stone trapping.
- ◆ Enhanced resistance to rib tear and exceptional wear life.
- ◆ Designed for city and highway service.
- ◆ Suitable for steer and trailer wheels.

SIZE	P.R.	LOAD INDEX	SPEED SYMBLE	LOAD CAPACITY KGS		STANDARD RIM	TREAD DEPTH MM	TREAD WIDTH MM
				SINGLE	DUAL			
11R22.5	16PR	146/143	M	3000	2725	8.25	14.5	220
	18PR	149/146	M	3250	3000			
11R24.5	16PR	149/146	M	3250	3000	8.25	14.5	220
	18PR	152/149	L	3550	3250			

# AURUNZE



# D298

- ◆ Wide deep tread pattern allows for a long wear life.
- ◆ Excellent performance for driving and braking
- ◆ New tread design giving excellent traction and cut resistance
- ◆ Very popular fitment for drive wheel.

SIZE	P.R.	LOAD INDEX	SPEED SYMBLE	LOAD CAPACITY KGS		STANDARD RIM	TREAD DEPTH MM	TREAD WIDTH MM
				SINGLE	DUAL			
295/75R22.5	18PR	146/143	M	3000	2725	9.00	22	220



# D318

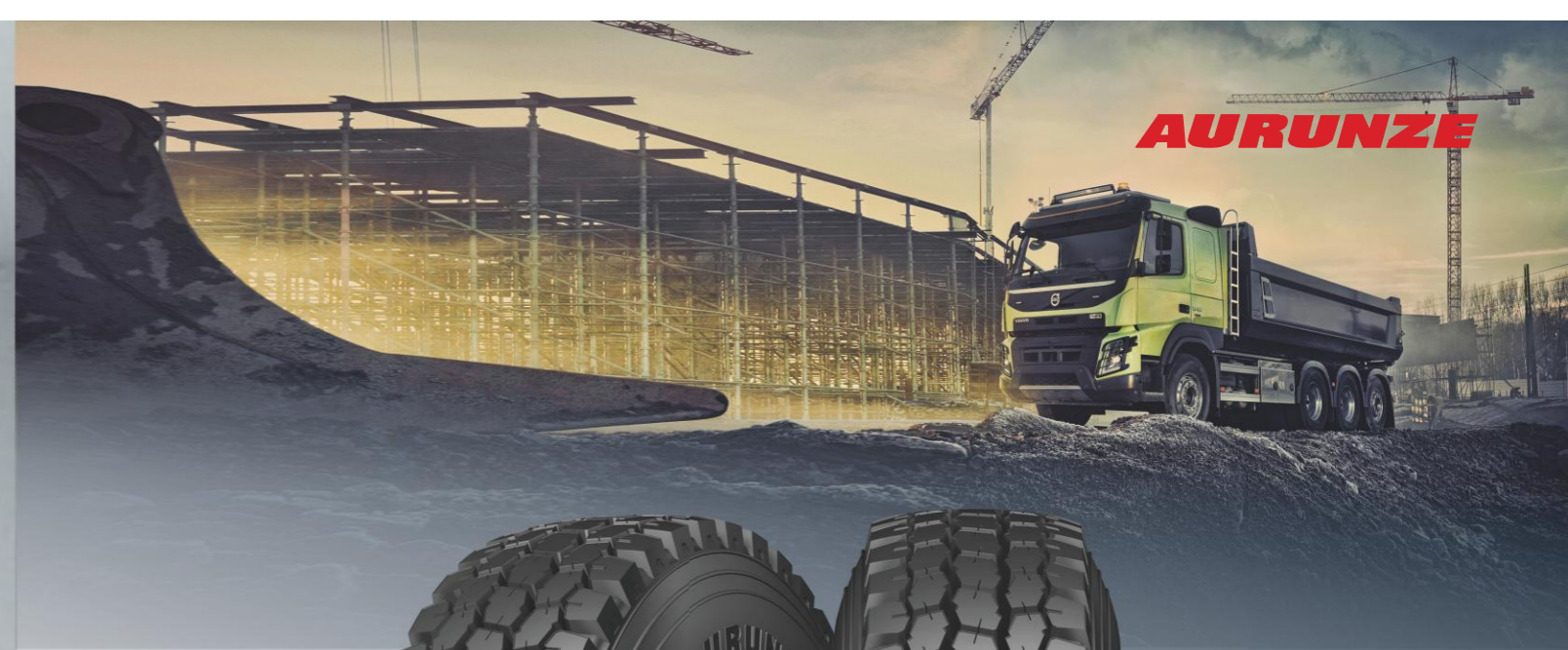


9.00

- ◆ Resistance to irregular wear.
- ◆ High level of traction for on and off road.
- ◆ Wider and deeper tread using a special rubber compound designed to extend the life of the tyre.
- ◆ Suitable for drive and trailer wheels.

SIZE	P.R.	LOAD INDEX	SPEED SYMBLE	LOAD CAPACITY KGS		STANDARD RIM	TREAD DEPTH MM	TREAD WIDTH MM
				SINGLE	DUAL			
11R22.5	16PR	146/143	L	3000	2725	8.25	20.6	210
	18PR	149/146	K	3250	3000			
12R22.5	18PR	152/149	L	3550	3250	9.00	20.6	240

**AURUNZE**



9.00

- ◆ Excellent driving and traction performance
- ◆ Big block pattern ensures excellent driving and stronger traction performance
- ◆ Better drainage performance
- ◆ Special pattern design can effectively avoid skidding on rainy day, ensuring driving safety

# D328

SIZE	P.R.	LOAD INDEX	SPEED SYMBLE	LOAD CAPACITY KGS		STANDARD RIM	TREAD DEPTH MM	TREAD WIDTH MM
				SINGLE	DUAL			
11R22.5	16PR	146/143	L	3000	2725	8.25	20.50	215
11R22.5	18PR	149/146	L	3250	3000	8.25	20.50	215
11R24.5	16PR	149/146	L	3250	3000	8.25	20.50	215
11R24.5	18PR	152/149	L	3550	3250	8.25	20.50	215



# D338



- ◆ All position tyre suitable for both on and off road applications.
- ◆ Cut resistant tread compound.
- ◆ Wider and deeper tread using a special rubber compound designed to extend the life of the tyre.
- ◆ Stone ejectors in the tread prevents stone retention which can lead to casing damage.

SIZE	P.R.	LOAD INDEX	SPEED SYMBLE	LOAD CAPACITY KGS		STANDARD RIM	TREAD DEPTH MM	TREAD WIDTH MM
				SINGLE	DUAL			
11R24.5	16PR	149/146	K	3250	3000	8.25	20.50	215
11R24.5	18PR	152/149	K	3550	3250	8.25	20.50	215

# AURUNZE



# D378

- ◆ With strengthened bead design and improving the steel wire strength, the loading performance is increased by 20%
- ◆ Small bulge in the bottom of grooves can effectively pop out the stones
- ◆ Tread rubber uses RSS+ silica+tear resistant resin, which can improve the strength of rubber, Tear resistant resin reinforces rubber toughness Highly resistant to irregular wear. Suitable for steer wheels.

SIZE	P.R.	LOAD INDEX	SPEED SYMBLE	LOAD CAPACITY KGS		STANDARD RIM	TREAD DEPTH MM	TREAD WIDTH MM
				SINGLE	DUAL			
11R22.5	16PR	146/143	L	3000	2725	8.25	19.00	216
	18PR	149/146	L	3250	3000	8.25	19.00	216



# D389



- ◆ Wide deep tread pattern allows for a long wear life.
- ◆ High level of traction for on and off road.
- ◆ Cut resistant with good self cleaning properties.
- ◆ Suitable for drive wheel.

SIZE	P.R.	LOAD INDEX	SPEED SYMBL	LOAD CAPACITY KGS		STANDARD RIM	TREAD DEPTH MM	TREAD WIDTH MM
				SINGLE	DUAL			
10.00R20	18PR	149/146	D	3550	3000	7.50	17.50	216



# D398

- ◆ Stronger loading capability Strengthened bead design provides better loading capability.
- ◆ Anti-puncture for safe driving.
- ◆ Big block pattern design provide excellent anti-puncture performance

SIZE	P.R.	LOAD INDEX	SPEED SYMBL	LOAD CAPACITY KGS		STANDARD RIM	TREAD DEPTH MM	TREAD WIDTH MM
				SINGLE	DUAL			
11R22.5	16PR	146/143	G	3000	2725	8.25	19.50	216
	18PR	149/146	G	3250	3000	8.25	19.50	216
295/80R22.5	18PR	152/149	F	3550	3250	9.00	18.5	232
13R22.5	20PR	156/153	F	4000	3650	9.75	19.5	238



# D828



- ◆ Strengthened bead design provides better loading capability.
- ◆ The wider tread design increases the ground contact area and improves the anti-wear performance.
- ◆ Three unequal pitch design and disordered pattern can effectively reduce noise.

SIZE	P.R.	LOAD INDEX	SPEED SYMBLE	LOAD CAPACITY KGS		STANDARD RIM	TREAD DEPTH MM	TREAD WIDTH MM
				SINGLE	DUAL			
9.00R20	16PR	144/142	K	2800	2650	7.00	18.00	195
10.00R20	18PR	149/146	J	3250	3000	7.50	18.00	216
11.00R20	18PR	152/149	F	3550	3250	8.00	20.00	223
12.00R20	20PR	156/153	F	4000	3650	8.50	20.00	240

**AURUNZE**



# D875

- ◆ Stone ejectors in the tread prevents stone retention which can lead to casing damage.
- ◆ New tread design giving excellent traction and cut resistance.
- ◆ Wider and deeper tread using a special rubber compound designed to extend the life of the tyre.
- ◆ Suitable for both drive and trailer fitment.

SIZE	P.R.	LOAD INDEX	SPEED SYMBLE	LOAD CAPACITY KGS		STANDARD RIM	TREAD DEPTH MM	TREAD WIDTH MM
				SINGLE	DUAL			
315/80R22.5	20PR	157/154	J	4125	3750	9.00	19.5	240
295/80R22.5	18PR	152/149	J	3550	3250	9.00	18	232
13R22.5	20PR	156/153	J	4000	3650	9.75	19	238



# D876



- ◆ Designed for drive axle trucks and buses.
- ◆ Unique tie-bar pattern design offers superior resistance to irregular wearing and block tearing.
- ◆ Provides longer tread life and high speed durability.
- ◆ High mileage and speed with lower heat build up

SIZE	P.R.	LOAD INDEX	SPEED SYMBL	LOAD CAPACITY KGS		STANDARD RIM	TREAD DEPTH	TREAD WIDTH
				SINGLE	DUAL		MM	MM
11R22.5	16PR	146/143	L	3000	2725	8.25	19.00	216
	18PR	149/146	L	3250	3000	8.25	19.00	216
315/80R22.5	20PR	157/154	L	4125	3750	9.00	19.00	240
295/80R22.5	18PR	152/149	K	3550	3250	9.00	18.00	232

# AURUNZE



# A818 PRO

- ◆ Fuel efficient with lower rolling resistance.
- ◆ Excellent traction and wet weather handling.
- ◆ Wider tread and complex groove angles offers enhanced tyre life with superior resistance to irregular wear. Suitable for all wheel positions.

SIZE	P.R.	LOAD INDEX	SPEED SYMBL	LOAD CAPACITY KGS		STANDARD RIM	TREAD DEPTH	TREAD WIDTH
				SINGLE	DUAL		MM	MM
12.00R20	20PR	156/153	K	4000	3650	8.50	16.50	239
13R22.5	20PR	156/153	K	4000	3650	9.75	17.50	242



# S210 PRO



- ◆ Fuel efficient with lower rolling resistance.
- ◆ Wide tread for long life and high speed durability.
- ◆ Highly resistant to irregular wear.
- ◆ Suitable for steer wheels.

SIZE	P.R.	LOAD INDEX	SPEED SYMBLE	LOAD CAPACITY KGS		STANDARD RIM	TREAD DEPTH MM	TREAD WIDTH MM
				SINGLE	DUAL			
215/75R17.5	16PR	127/124	M	1750	1600	6.00	13.0	185
	18PR	135/133	L	2180	2060	6.00	13.0	185
235/75R17.5	16PR	132/129	M	2000	1850	6.75	13.5	195
	18PR	143/141	L	2725	2575	6.75	13.5	195
225/80R17.5	16PR	129/127	M	1850	1750	6.75	13.0	185

**AURUNZE**



# S216 PRO

- ◆ Exceptional mileage and resistance to irregular wear.
- ◆ Excellent high speed stability and durability.
- ◆ Excellent resistance to rib-tearing.
- ◆ Suitable for steer and trailer wheels.

SIZE	P.R.	LOAD INDEX	SPEED SYMBLE	LOAD CAPACITY KGS		STANDARD RIM	TREAD DEPTH MM	TREAD WIDTH MM
				SINGLE	DUAL			
11R22.5	16PR	146/143	M	3000	2725	8.25	15.0	220
	18PR	149/146	M	3250	3000	8.25	15.0	220
11R24.5	16PR	149/146	M	3250	3000	8.25	15.0	220
	18PR	152/149	L	3550	3250	9.00	17.0	245
295/80R22.5	18PR	152/149	M	3550	3250	9.00	17.0	245
315/80R22.5	20PR	157/154	M	4125	3750	9.00	15.5	250
	22PR	158/156	L	4250	4000	9.00	15.5	250



# S618 PRO



- ◆ Exceptional mileage and resistance to irregular wear.
- ◆ Excellent high speed stability and durability.
- ◆ Excellent resistance to rib-tearing.
- ◆ Suitable for steer and trailer wheels.

SIZE	P.R.	LOAD INDEX	SPEED SYMBLE	LOAD CAPACITY KGS		STANDARD RIM	TREAD DEPTH MM	TREAD WIDTH MM
				SINGLE	DUAL			
295/80R22.5	18PR	152/149	M	3550	3250	9.00	17.0	245
315/80R22.5	20PR	157/154	M	4125	3750	9.00	15.5	250
	22PR	158/156	L	4250	4000			

**AURUNZE**



# D218 PRO

- ◆ Resistance to irregular wear.
- ◆ High level of traction for on and off road.
- ◆ Wider and deeper tread using a special rubber compound designed to extend the life of the tyre.
- ◆ Suitable for drive and trailer wheels.

SIZE	P.R.	LOAD INDEX	SPEED SYMBLE	LOAD CAPACITY KGS		STANDARD RIM	TREAD DEPTH MM	TREAD WIDTH MM
				SINGLE	DUAL			
215/75R17.5	16PR	127/124	K	1750	1600	6.00	15.5	185
215/75R17.5	18PR	135/133	J	2180	2060	6.00	15.5	185
235/75R17.5	16PR	132/129	K	2000	1850	6.75	15.5	195
235/75R17.5	18PR	143/141	J	2725	2575	6.75	15.5	195



# D518 PRO



- ♦ Cut resistant with good self-cleaning properties.
- ♦ Resistance to irregular wear.
- ♦ Very popular fitment for drive wheel.
- ♦ Wider and deeper tread using a special rubber compound designed to extend the life of the tyre.

SIZE	P.R.	LOAD INDEX	SPEED SYMBLE	LOAD CAPACITY KGS		STANDARD RIM	TREAD DEPTH MM	TREAD WIDTH MM
				SINGLE	DUAL			
11R22.5	16PR	146/143	L	3000	2725	8.25	23.0	228
	18PR	149/146	J	3250	3000			
11R24.5	16PR	149/146	L	3250	3000	8.25	23.0	228
	18PR	152/149	L	3550	3250			

**AURUNZE**



# D528 PRO

- ♦ Open grooves maximize self-cleaning capabilities.
- ♦ Rib design inside the groove reduces stone retention.
- ♦ Extra deep tread and M&S lug pattern are designed specifically for on and off-road applications.

SIZE	P.R.	LOAD INDEX	SPEED SYMBLE	LOAD CAPACITY KGS		STANDARD RIM	TREAD DEPTH MM	TREAD WIDTH MM
				SINGLE	DUAL			
11R22.5	16PR	146/143	L	3000	2725	8.25	25.0	220
	18PR	149/146	F	3250	3000			
11R24.5	16PR	149/146	J	3250	3000	8.25	25.0	220
	18PR	149/146	F	3250	3000			



# D558 PRO



- ◆ Stronger loading capability Strengthened bead design provides better loading capability.
- ◆ Anti-puncture for safe driving.
- ◆ Big block pattern design provide excellent anti-puncture performance.

SIZE	P.R.	LOAD INDEX	SPEED SYMBLE	LOAD CAPACITY KGS		STANDARD RIM	TREAD DEPTH MM	TREAD WIDTH MM
				SINGLE	DUAL			
11R22.5	16PR	146/143	F	3000	2725	8.25	23.0	216
	18PR	149/146	D	3250	3000			



# D568 PRO

- ◆ Suitable tyre for trucks and buses
- ◆ Unique pattern design offers superior resistance to irregular wearing.
- ◆ High resistance to cuts and stone damage.
- ◆ Suitable for drive wheels.

SIZE	P.R.	LOAD INDEX	SPEED SYMBLE	LOAD CAPACITY KGS		STANDARD RIM	TREAD DEPTH MM	TREAD WIDTH MM
				SINGLE	DUAL			
13R22.5	20PR	156/153	K	4000	3650	9.75	20.00	245



# D578 PRO



- ♦ Wide tread enables long wear life with stability and durability.
- ♦ Deep tread for extra-long life and excellent traction.
- ♦ Cut resistance with good self cleaning properties in harsh conditions.

SIZE	P.R.	LOAD INDEX	SPEED SYMBLE	LOAD CAPACITY KGS		STANDARD RIM	TREAD DEPTH MM	TREAD WIDTH MM
				SINGLE	DUAL			
13R22.5	20PR	156/153	F	4000	3650	9.75	23.50	248

**AURUNZE**



# D638 PRO

- ♦ Stone ejectors in the tread prevents stone retention which can lead to casing damage.
- ♦ New tread design giving excellent traction and cut resistance.
- ♦ Wider and deeper tread using a special rubber compound designed to extend the life of the tyre.
- ♦ Suitable for both drive and trailer fitment.

SIZE	P.R.	LOAD INDEX	SPEED SYMBLE	LOAD CAPACITY KGS		STANDARD RIM	TREAD DEPTH MM	TREAD WIDTH MM
				SINGLE	DUAL			
295/80R22.5	18PR	152/149	J	3550	3250	9.00	18.5	245
315/80R22.5	20PR	157/154	J	4125	3750	9.00	19.5	250
	22PR	158/156	G	4250	4000			



# D658 PRO



- ◆ Better braking and wet grip performance.
- ◆ All-season pattern design, excellent driving, braking and anti-skid performance in the condition of rainy and snowy weather.
- ◆ Stronger loading capability.
- ◆ Reinforced bead design improves the tire's loading capacity.

SIZE	P.R.	LOAD INDEX	SPEED SYMBL	LOAD CAPACITY KGS		STANDARD RIM	TREAD DEPTH MM	TREAD WIDTH MM
				SINGLE	DUAL			
295/80R22.5	18PR	152/149	M	3550	3250	9.00	20.5	248
315/80R22.5	20PR	157/154	L	4125	3750	9.00	20.5	260
	22PR	158/156	L	4250	4000			



# D668 PRO

- ◆ Stronger loading capability Strengthened bead design provides better loading capability.
- ◆ Anti-puncture for safe driving.
- ◆ Big block pattern design provide excellent anti-puncture performance.

SIZE	P.R.	LOAD INDEX	SPEED SYMBL	LOAD CAPACITY KGS		STANDARD RIM	TREAD DEPTH MM	TREAD WIDTH MM
				SINGLE	DUAL			
225/80R17.5	16PR	129/127	J	1850	1750	6.75	15.0	185
295/80R22.5	18PR	152/149	F	3550	3250	9.00	22.0	248
315/80R22.5	20PR	157/154	F	4125	3750	9.00	22.0	250
	22PR	158/156	G	4250	4000			
12R22.5	18PR	152/149	F	3550	3250	9.00	24.0	236



# D678 PRO



34

- ◆ Designed for drive axle trucks and buses.
- ◆ Unique tie-bar pattern design offers superior resistance to irregular wearing and block tearing.
- ◆ Provides longer tread life and high speed durability.
- ◆ High mileage and speed with lower heat build up.

SIZE	P.R.	LOAD INDEX	SPEED SYMBLE	LOAD CAPACITY KGS		STANDARD RIM	TREAD DEPTH MM	TREAD WIDTH MM
				SINGLE	DUAL			
12R22.5	18PR	152/149	M	3550	3250	9.00	20.5	236

# AURUNZE



35

# D812 PRO

- ◆ Wide deep tread pattern allows for a long wear life.
- ◆ Excellent performance for driving and braking.
- ◆ New tread design giving excellent traction and cut resistance.
- ◆ Very popular fitment for drive wheel.

SIZE	P.R.	LOAD INDEX	SPEED SYMBLE	LOAD CAPACITY KGS		STANDARD RIM	TREAD DEPTH MM	TREAD WIDTH MM
				SINGLE	DUAL			
11R22.5	16PR	146/143	L	3000	2725	8.25	22.5	224
	18PR	149/146	L	3250	3000			
11R24.5	16PR	149/146	L	3250	3000	8.25	20.5	224
	18PR	152/149	L	3250	3000			



# D877 PRO



- ◆ Suitable for steer and drive wheel fitment.
- ◆ Suitable for both on and off road applications.
- ◆ Super level of traction.
- ◆ Resistant to cuts and stone retention.

SIZE	P.R.	LOAD INDEX	SPEED SYMBL	LOAD CAPACITY KGS		STANDARD RIM	TREAD DEPTH MM	TREAD WIDTH MM
				SINGLE	DUAL			
11R22.5	16PR	146/143	L	3000	2725	8.25	25.00	220
	18PR	149/146	K	3250	3000	8.25	20.50	215
11R24.5	16PR	152/149	L	3550	3250	8.25	20.50	215
	18PR	152/149	L	3550	3250	8.25	21.00	228
12.00R20	20PR	156/153	F	4000	3650	8.50	20.5	240

**AURUNZE**



# D978 PRO

- ◆ Wide tread enables long wear life with stability and durability.
- ◆ Deep tread for extra-long life and excellent traction.
- ◆ Cut resistance with good self cleaning properties in harsh conditions.
- ◆ Suitable for all wheel position on mining vehicles.

SIZE	P.R.	LOAD INDEX	SPEED SYMBL	LOAD CAPACITY KGS		STANDARD RIM	TREAD DEPTH MM	TREAD WIDTH MM
				SINGLE	DUAL			
11.00R20	18PR	152/149	G	3550	3250	8.00	24.00	230



**W868 PRO**



- ◆ Wide deep tread pattern allows for a long wear life.
- ◆ High level of traction for on and off road.
- ◆ Cut resistant with good self cleaning properties.
- ◆ Suitable for drive wheel.

SIZE	P.R.	LOAD INDEX	SPEED SYMBL	LOAD CAPACITY KGS		STANDARD RIM	TREAD DEPTH MM	TREAD WIDTH MM
				SINGLE	DUAL			
11R22.5	16PR	146/143	L	3000	2725	8.25	21.00	228
	18PR	149/146	K	3250	3000	8.25	21.00	228
11R24.5	16PR	152/149	L	3250	3000	8.25	21.00	228
	18PR	152/149	L	3550	3250	8.25	21.00	228